

PARKSIDE AT MOUNTAIN VIEW

INCLUDED FEATURES



COMMUNITY AMENITIES

- 164 Single-family homes
- Public water and sewer
- Asphalt driveways
- Concrete service walks & sidewalks
- Underground cable TV
- Professionally graded and seeded lawns
- Landscape package
- Tree-lined streets
- Street lights
- Belgian block curbs

MAGNIFICENT KITCHEN DESIGNS

- Gourmet kitchen with state-of-the-art design & amenities (stainless steel appliances)
- 42" custom-crafted Maple cabinetry
- Granite countertops in a choice of colors
- Whirlpool® Gas Cooktop with Self-Cleaning Double Wall Oven
- Whirlpool® Energy Star sound-insulated dishwasher
- Whirlpool® under cabinet microwave oven vented to outside
- Oak hardwood flooring by Bruce®
- Stainless steel undermount kitchen sink with designer faucet
- Hi-hat light over the kitchen sink
- Garbage disposal

INTERIOR APPOINTMENTS

- 9' first floor ceilings in all models
- Oak treads and railings with painted balusters on main stairs
- Plush wall-to-wall carpeting in a wide choice of colors
- Distinctive colonial six-panel interior doors with traditional colonial trim
- Abundant closet space with vinyl-coated ventilated shelving
- Laundry tub, hook-ups for washer, and gas dryer
- Smoke alarms (with battery back-up) on each living level and in each bedroom
- Volume and tray ceilings where applicable per plan
- Oak hardwood flooring in foyer, Kitchen and Breakfast Area
- Two piece 5 ¼" crown with neck molding in the dining room, living room, foyer and second floor hall
- Chair rail in the dining room and foyer
- Shadow box trim package in foyer

LUXURIOUS BATHROOMS

- Lavish owner's bath with soaking tub and ceramic tile shower walls
- Owner's and hall bath with cultured marble vanity tops in a choice of colors with Maple vanities and chrome Moen® faucets
- Powder room with pedestal sink and 8" x 8" ceramic floor tile
- 6" x 6" ceramic wall tile in owner's and hall bath
- 12" x 12" ceramic floor tile in owner's and hall bath
- Obscure glass shower enclosure in the owner's bath

eSMART™ ENERGY-SAVING DESIGN

- 50-gallon gas-fired water heater
- Gas hot air heating system & 13 SEER Central AC
- Low flow plumbing fixtures
- Native landscaping
- Merv-8 HVAC Filter
- Low VOC paint and carpeting
- CO Detector
- Programmable thermostat
- CFL lightbulbs
- Home energy monitor
- Low-E windows and door glass
- Advanced framing techniques
- Air barrier / sealing
- 6-panel colonial-style insulated front door
- Steel insulated garage doors with raised panels
- 200-AMP electrical service
- House wrap to reduce air filtration
- Fully insulated (R-38) ceilings and (R-15) exterior walls
- 92.1% efficient furnace

EXCEPTIONAL FEATURES

- Engineered roof systems
- Maintenance-free vinyl siding with stone, stucco or brick on the front façade per elevation
- Maintenance-free exterior trim & ventilated vinyl soffits (most areas)
- Aluminum gutters & down spouts
- Two frost-free exterior hose bibs and Front and rear waterproof exterior outlets
- Self-sealing dimensional roof shingles with a 30-year warranty
- Brushed nickel front door hardware with dead-bolt
- Two CAT-5 phone jacks and two RG6 cable outlets

QUALITY ASSURANCE & COMPLETE CARE & COMMITMENT TEAM

- 10-year structural warranty/insured program through Professional Warranty Corp
- Beazer Customer Satisfaction Program - Pre construction meeting, Pre drywall meeting & Pre settlement orientation
- New Home Counselors & Builders will lead you through the home buying process
- Elaborate Design Studio with professional Design Staff to personalize your home
- National Warranty Call Center for your convenience

The above information is subject to change without notice.

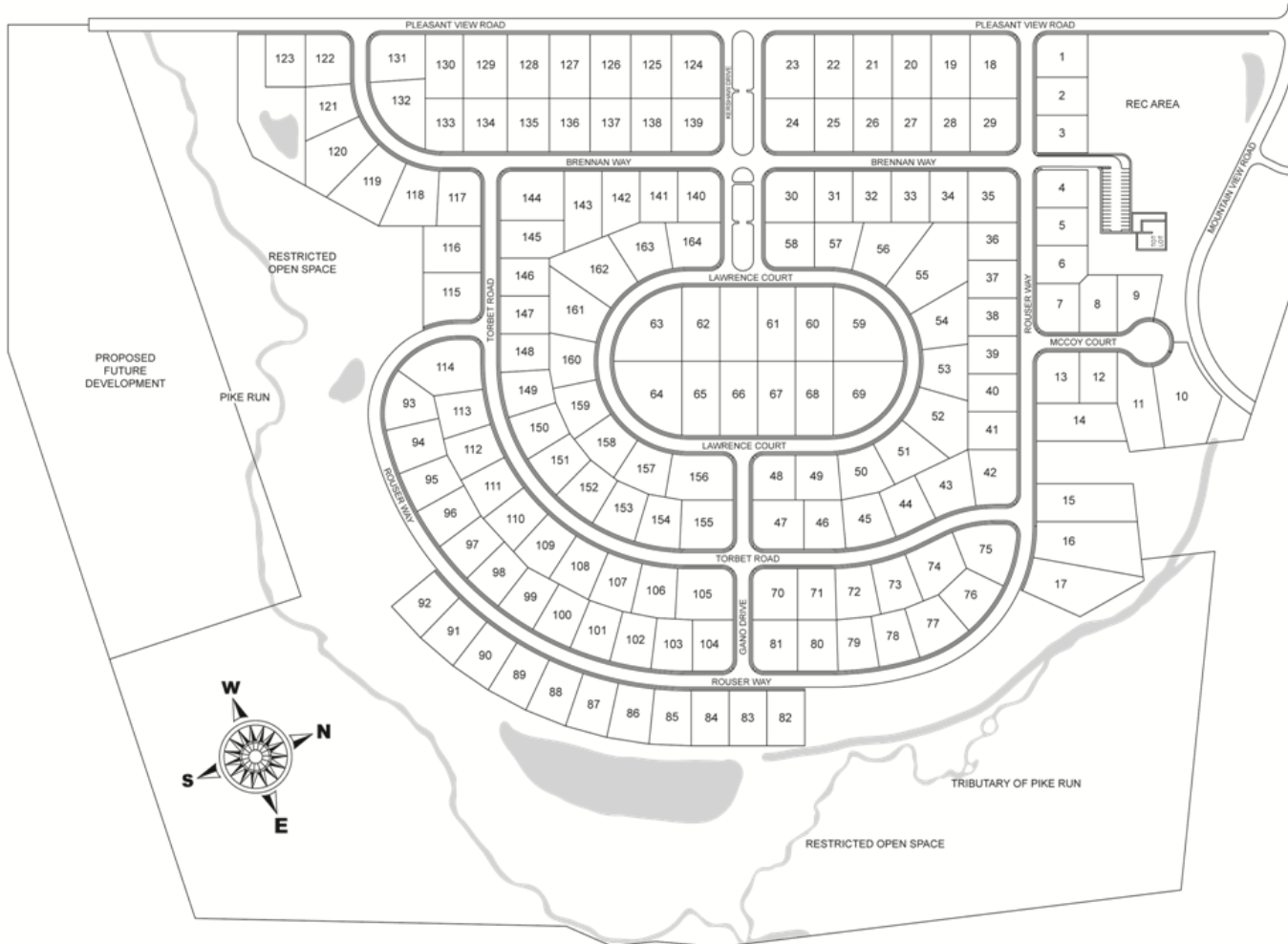
12/01/10



PARKSIDE AT MOUNTAIN VIEW COMMUNITY SITE PLAN



A HIGHER MEASURE OF HOME



Note: Homesites are approximate. Easements and other conditions are not shown on this plan. Refer to approved engineering plans for homesite specific information. Not responsible for errors or omissions. Subject to change without notice.

